



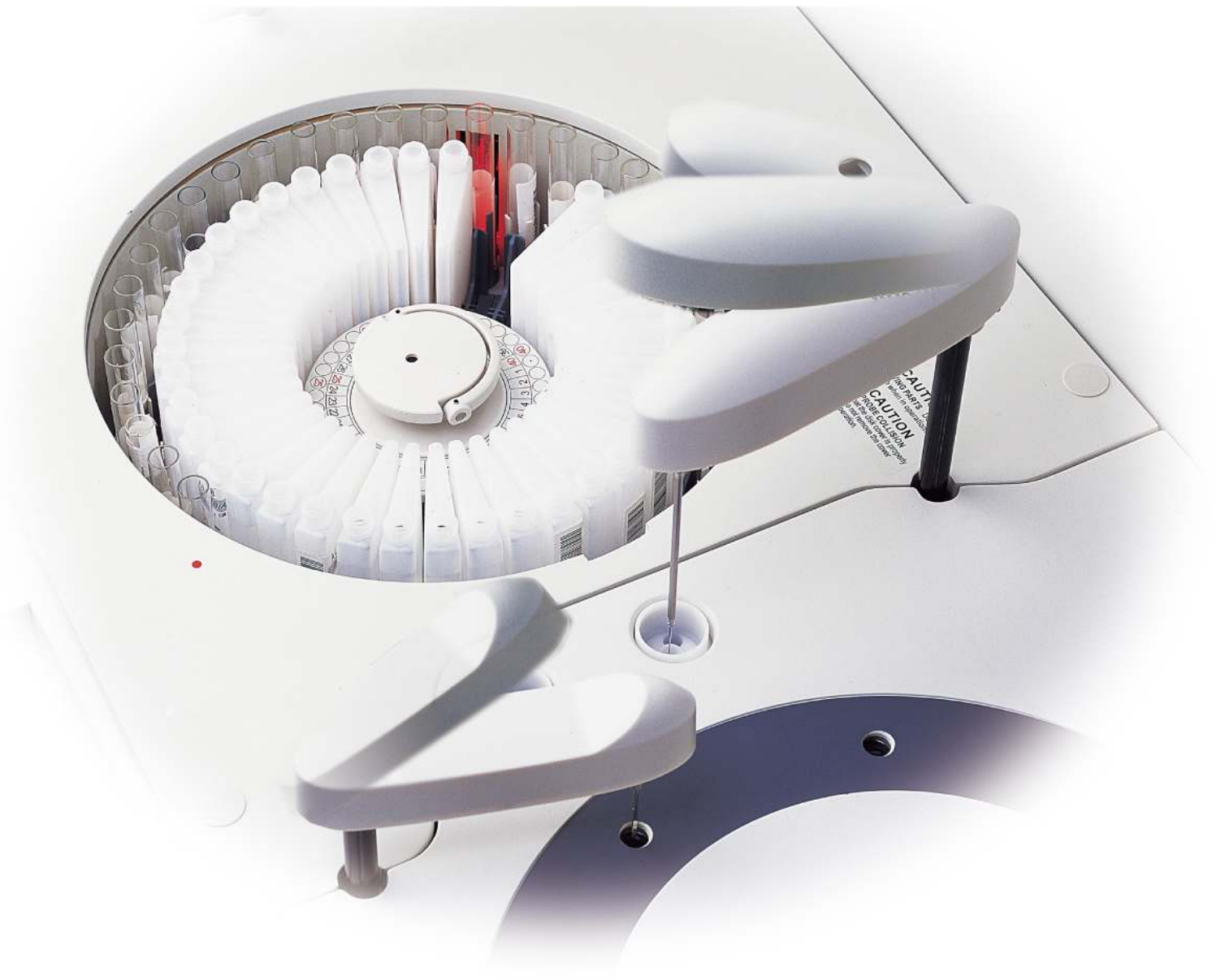
BS-200 Chemistry Analyzer

BS-200

Chemistry Analyzer

- Discrete, random access, automated
- 200 tests per hour, up to 330 tests per hour with ISE
- Optional for ISE module and internal bar code reader
- Up to 40 positions for samples and reagents respectively
- Automatic probe cleaning, liquid level detection, collision protection
- Reversed optic system with 8 wavelengths: 340-670nm
- Refrigerated reagent compartment
- Bi-directional LIS interface





Sample of Test Menu

Enzymes

ALT	AST	ALP	ACP	α -HBDH	LDH	CK	CK-MB	α -AMY	MSO	ChE
ADA	γ -GT	MAO	LIP	NAG						

Substrates

TG	TC	HDL Cholesterol		LDL Cholesterol		Glu	Lactate	UREA	BUN	Cr
UA	TP	Alb	TBIL	DBIL	TBA	FMN				

Electrolytes

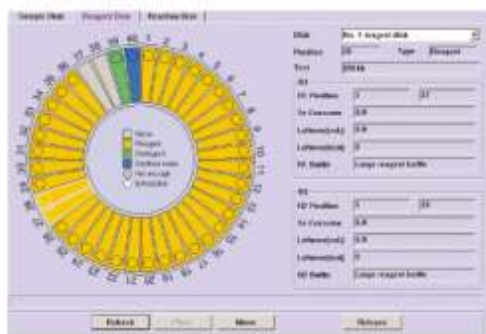
Na	K	Cl	Ca	Mg	P	Fe	UIBC	TF	Cu
----	---	----	----	----	---	----	------	----	----

Specific Proteins

ApoA1	ApoB	Lp(a)	ASO	C3	C4	CRP	IgA	IgM	IgG
Microalbumin	FR	β 2-MG	Myoglobin	FIB					

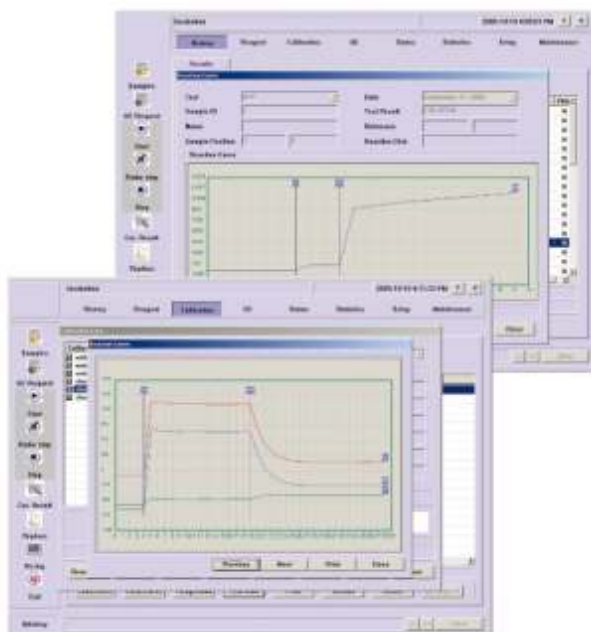
Others

HbA1c	HbAo	U-Alb	BTR
-------	------	-------	-----



Dynamic and real time display of running status

- Running status of reagent tray, sample tray and reaction tray
- Real time monitoring of reagent residual volume
- Intelligent carry over settings to adjust test sequence
- Probe depth adjustment automatically



Original reaction data record

- Real time monitoring of reaction curve
- Bichromatic testing to avoid interference
- Simultaneously display primary and secondary wavelengths
- Detailed profile of alert messages
- Real time diagnosis of system working status



Optimum calibration curve

- Calibration classification:
- Linear curve type: Single-point linear, two-point linear and Multi-point linear.
- Nonlinear curve type: Logistic-Log 4P, Logistic-Log 5P, Exponential5P, Polynomial5P and Spline.



High quality ISE Module (optional)

- Measuring K^+ , Na^+ , Cl^-
- Throughput: up to 225 tests per hour
- 6 months shelf life



Multi-function sample/reagent probe

- Collision protection
- Liquid level detection
- Internal and external probe washing
- Probe depth adjustment automatically
- Pre-heating for reagents



Excellent reaction tray

- High stability reaction temperature control at $37 \pm 0.1^\circ C$
- Spot photometry with high speed digital transmission system
- Contain 80 disposable reaction cuvettes
- 8 static fiber optics minimize electromagnetic interference
- Maintenance free heater elements



Multi-function sample/reagent tray

- Optional internal reagent/sample bar code reader
- 40 positions for samples and reagents respectively
- Up to 20/10 virtual sample/reagent trays can be programmed
- Primary tube and various sample cup can be used, non-fixed positions for samples, control, calibrator nor STAT
- 24 hour non stop cooling with Peltier elements



Disposable reaction cuvettes

- Disposable cuvettes to avoid carry over and saving of operating costs
- Automatic cuvettes blank testing to assure precise results



High performance mixer design

- Absence of cross contamination
- Optimal homogenization in minimum time
- It functions immediately (within the same period) depending of sample or the second reagent

BS-200

Chemistry Analyzer

Technical Specifications

System Function:

	Automatic, Discrete, Random Access STAT sample priority
Throughput:	up to 200 tests/hour (without ISE), up to 330 tests/hour with ISE
Measuring principles:	Absorbance photometry, Turbidimetry, Ion Selective Electrode technology
Methodology:	End-point, Fixed-time, Kinetic, optional ISE Single / Dual reagent chemistries, monochromatic / bichromatic Linear / non-linear multipoint calibration
Programming:	Open system with user defined profiles and calculation chemistries

Reagent/Sample Handling:

Reagent/Sample tray:	40 positions for reagents and 40 positions for samples in refrigerated compartment (4~15 °C)
Reagent volume:	
R1:	180~450µl, step by 1µl
R2:	30~450µl, step by 1µl
Sample volume:	3~45µl, step by 0.5µl
Reagent/Sample probe:	liquid level detection, collision protection and inventory checking
Probe cleaning:	automatic washing for both inside and outside carry over < 0.1%
Automatic sample dilution:	pre-dilution and post-dilution dilution ratio up to 150
dilution vessel:	disposable cuvette

Internal Bar Code Reader (optional):

Used for sample and reagent
programming
Be applicable to various bar code
systems of Codabar, ITF (Interleaved
Two of Five), code128, code39,
UPC/EAN, Code93
Capable to communicate with LIS in
bidirectional mode

ISE Module (optional)

Measuring K ⁺ , Na ⁺ , Cl ⁻	
Throughput:	Up to 225 tests per hour

Reaction System:

Reaction rotor:	rotating tray, containing 80 cuvettes
Cuvette:	optical length 5mm
Reaction volume:	180~500 µl
Reaction temperature:	37 °C
Temperature fluctuation:	± 0.1 °C
Independent mixing probe	

Optical System:

Light Source:	Halogen-tungsten lamp
Photometer:	reversed optics, static fiber spot photometry
Wavelength:	340nm、405nm、450nm、510nm、546nm、 578nm、630nm、670nm
Absorption range:	0~4.0Abs (10mm conversion)
Resolution:	0.0001Abs

Control and Calibration:

Calibration mode:	linear (one point, two-point and multi-point), Logit-Log 4P, Logit-Log 5P, spline, exponential, polynomial, parabola
Control software:	X-R, L-J, Westgard multi-rule, Cumulative sum check, twin plot

Operation Unit:

Operation system:	Windows XP Professional/Home SP2 or above Windows VISTA Home/Business
Interface:	RS-232

Working Conditions:

Power Supply:	AC100~130V, 50/60Hz, 1000W
Temperature:	15-30 °C
Humidity:	35-80%
Water consumption:	3.5L/hour De-ionized
Dimension:	Bench top: 860mm (W) x700mm (D) x625mm (H) Floor standing: 860mm (W) x700mm (D) x1160mm (H)
Weight:	Bench top: 116 kg Cabinet (optional): 51 kg



MINDRAY™

Mindray Building, Keji 12th Road South, High-tech Industrial Park,
Nanshan, Shenzhen 518057, P. R. China
Tel: +86 755 26582492, 26582888 Fax: +86 755 26582680
E-mail: intl-market@mindray.com Website: www.mindray.com



DISTRIBUTOR: